



URL <http://www.mimedia.co.jp/>



# COMPANY OVERVIEW

## Overview

**Company name : Mi media,Inc.**

**Executive representative : Miharuru Hideura,CEO**

**Company address : 56-1 Shimohongou-cho, Masuda-city, Shimane Pref. JAPAN**

**Founded : June 1984**

**Capital : 27,500,000yen**

## Business Overview

- **Development,operational support and maintenance business for a diverse range of business systems**
- **Consulting business for the creation and operation of network systems**
- **Marketing business for various information devices and equipment**
- **Internet provider business**
- **Versatile IT solution business**



## Company Introduction

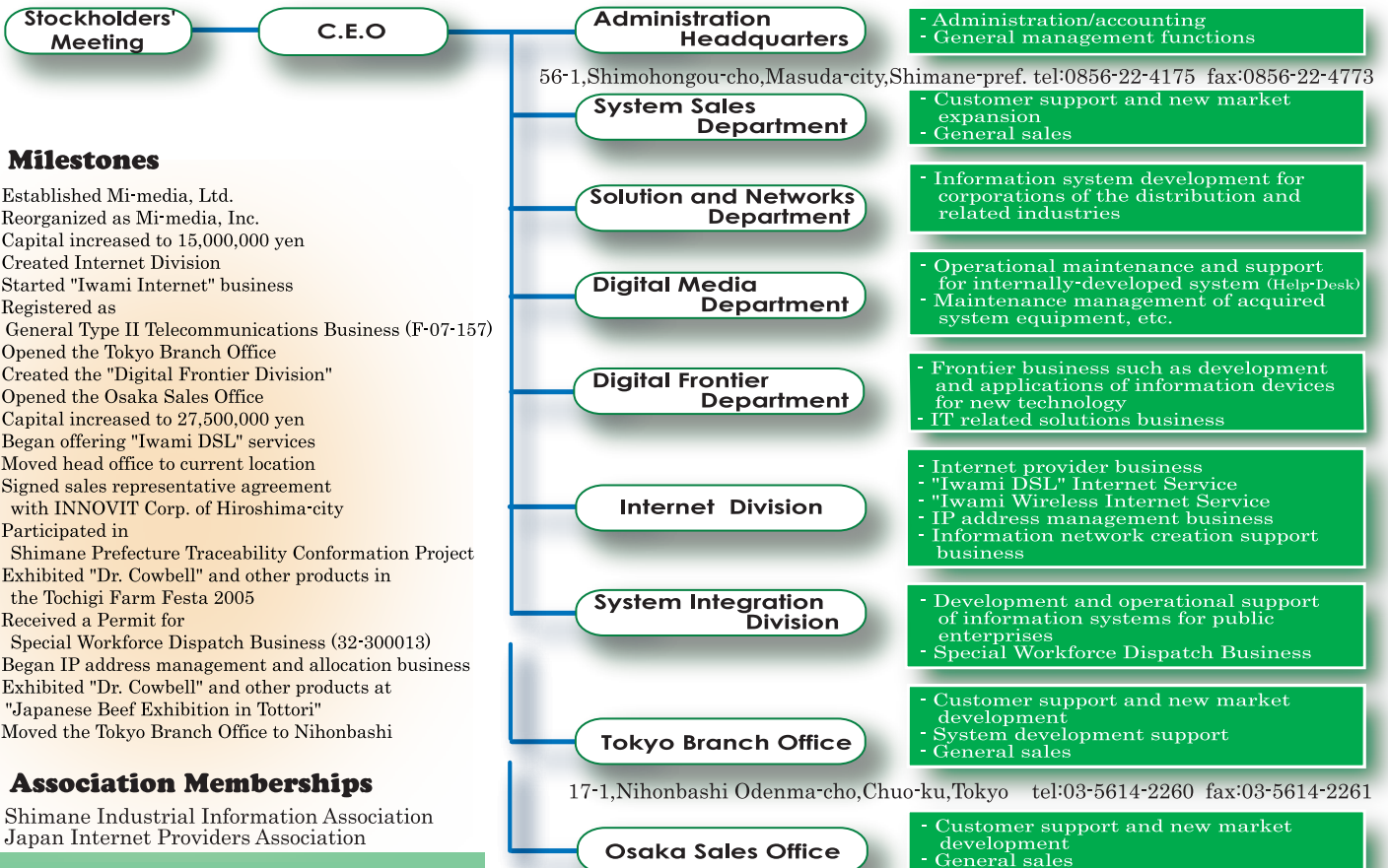
Mi media, Ltd. was established in 1984 as a software development company to realize micro media's potential as a regional information medium. Since then, we have undertaken the challenge of creating information systems for regional self-governing bodies, the distribution industry and other fields.

Company milestones include reorganization as a stock company in 1990, and to date, our Head Office in MASUDA-City, our TOKYO Branch Office and our OSAKA Sales Office provide business systems and services to approximately 300 customers nationwide in roughly 800 office locations. In parallel, we responded to the growth of the internet by establishing an internet provider business called "Iwami Internet". Our goal is to improve the technology of communication and information networks while providing distinctive services.

In recent years, our knowledge base of accumulated technology and expertise has driven new businesses such as the development of new IT equipment and the advancement of IT applications in new fields. We will continuously strive to be a frontier enterprise, always rising to the challenges of the ever-evolving information industry.

## Organization

### Function or Business



### Milestones

- 1984 - Established Mi-media, Ltd.
- 1990 - Reorganized as Mi-media, Inc.
- Capital increased to 15,000,000 yen
- 1996 - Created Internet Division
- Started "Iwami Internet" business
- Registered as General Type II Telecommunications Business (F-07-157)
- 2000 - Opened the Tokyo Branch Office
- Created the "Digital Frontier Division"
- 2001 - Opened the Osaka Sales Office
- 2002 - Capital increased to 27,500,000 yen
- Began offering "Iwami DSL" services
- 2005 - Moved head office to current location
- Signed sales representative agreement with INNOVIT Corp. of Hiroshima-city
- Participated in Shimane Prefecture Traceability Conformation Project
- Exhibited "Dr. Cowbell" and other products in the Tohigi Farm Festa 2005
- Received a Permit for Special Workforce Dispatch Business (32-300013)
- Began IP address management and allocation business
- 2007 - Exhibited "Dr. Cowbell" and other products at "Japanese Beef Exhibition in Tottori"
- 2008 - Moved the Tokyo Branch Office to Nihonbashi

### Association Memberships

- Shimane Industrial Information Association
- Japan Internet Providers Association

17-1,Nihonbashi Odenma-cho,Chuo-ku,Tokyo tel:03-5614-2260 fax:03-5614-2261

6-3-32,Nishinakajima,Yodogawa-ku,Osaka-city tel:06-6101-0705 fax:06-6101-0706